



**CNC METAL
PROCESSING**





**POWER OF
PERFORMANCE.**

A close-up photograph of a person's hand holding a cylindrical metal component. A white target graphic with concentric circles and crosshairs is overlaid on the hand. The background is blurred, showing a workshop environment.

CNC
METAL PROCESSING

A red rectangular box containing text, with three horizontal red lines extending to the left towards the white background.

CNC MILLING
CNC TURNING
CAD/CAM

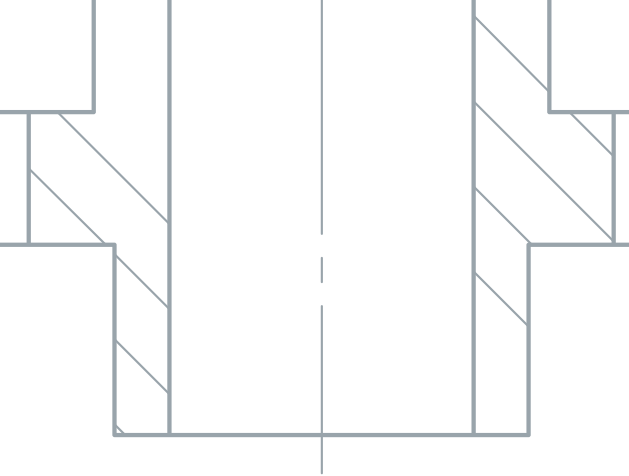
QUALITY CONTROL

ASSEMBLY OF COMPONENTS

LASER ENGRAVING

ADDITIONAL PROCESSING





ANCORP d.o.o. is a young company that specializes in the production and processing of metal with CNC technology.

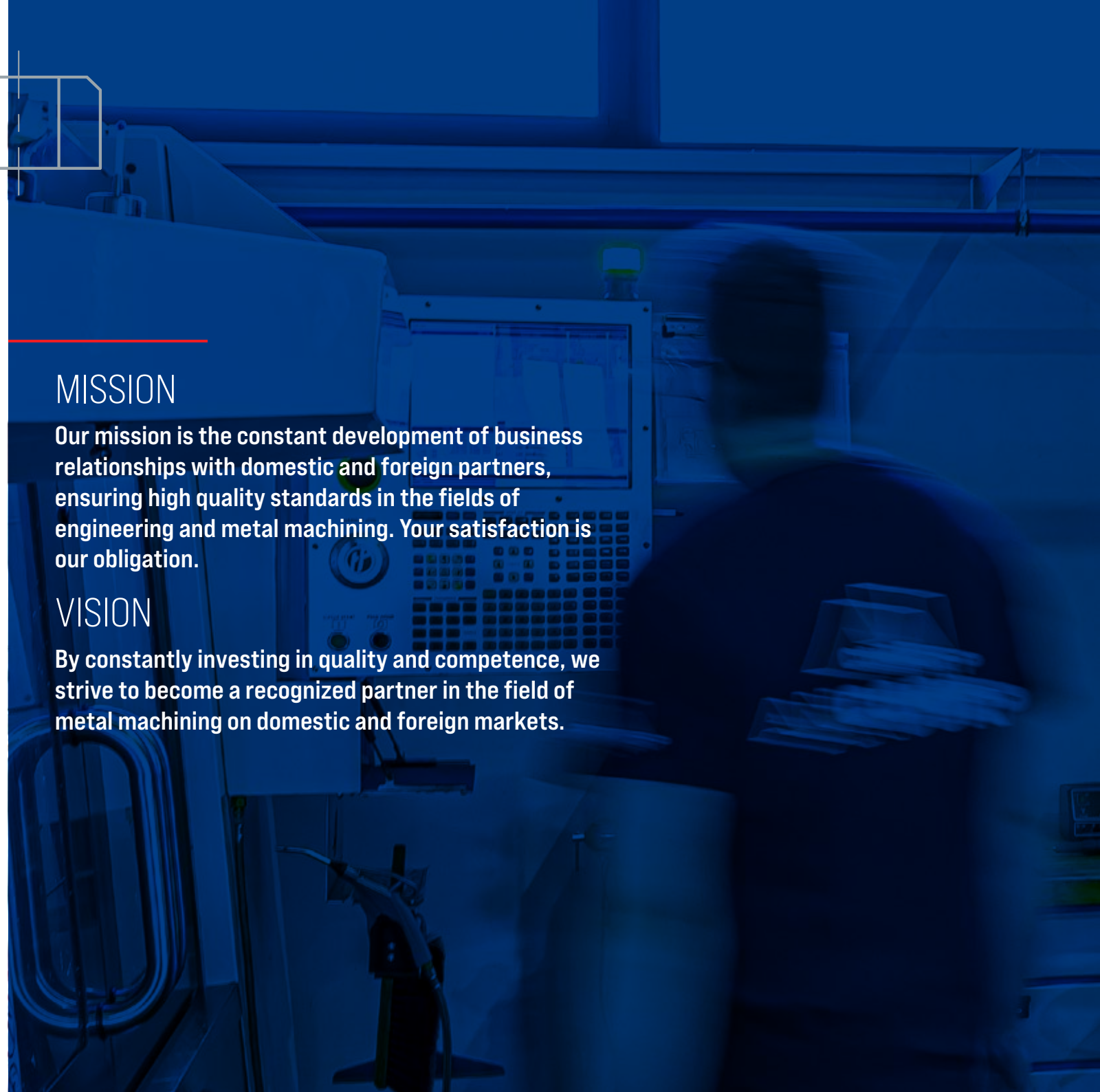
With our daily training and innovation, we can satisfy even the most demanding of clients.

MISSION

Our mission is the constant development of business relationships with domestic and foreign partners, ensuring high quality standards in the fields of engineering and metal machining. Your satisfaction is our obligation.

VISION

By constantly investing in quality and competence, we strive to become a recognized partner in the field of metal machining on domestic and foreign markets.





PROFESSIONAL PERSONNEL

MODERN MACHINE PARK

HIGH QUALITY

RESPONSIBILITY

INNOVATIONS IN PRODUCTION

FAST DELIVERY

CNC MILLING

Up to maximum dimensions of (X/Y/Z):
1626 x 813 x 762 mm

Materials we process:
**aluminum | steel | stainless steel | brass |
bronze | plastic, etc.**





**EXCELLENCE
GUARANTEES
QUALITY.**

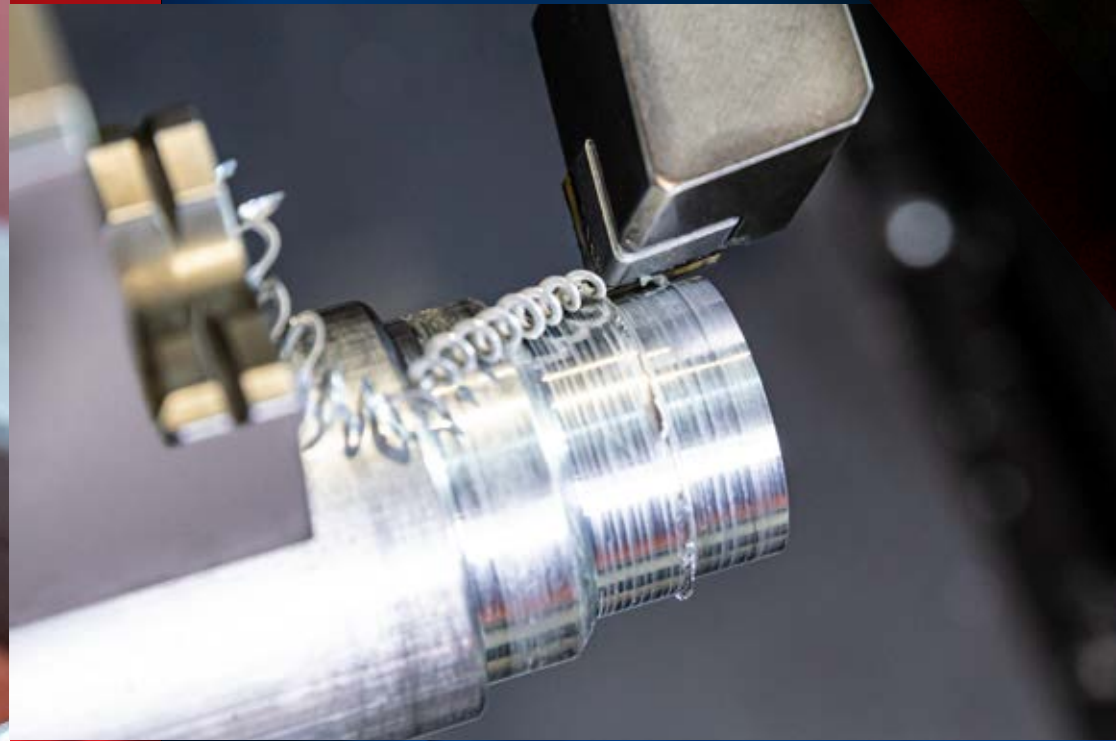


CNC TURNING

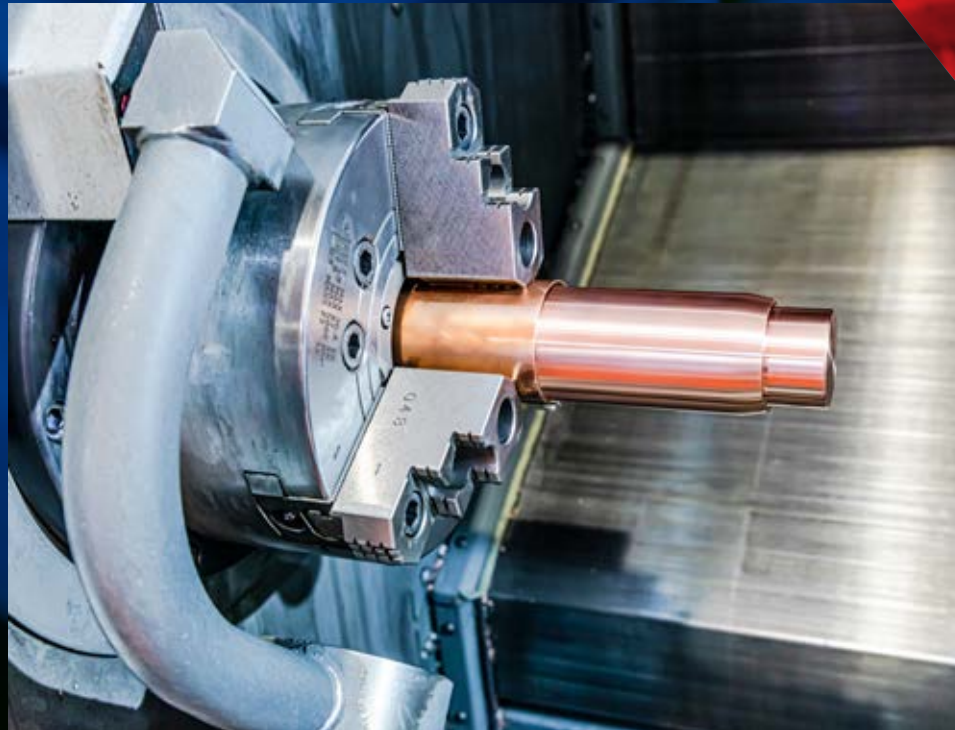
Up to maximum dimensions of (X/Z):
210 x 406 mm

Materials we process:
**aluminum | steel | stainless steel | brass |
bronze | plastic, etc.**





**INNOVATION
IS OUR
STRENGTH.**



QUALITY CONTROL



Altera S 7.5.5

X -- 711.2 mm | Y -- 508 mm | Z -- 508 mm

Quick and precise three-dimensional measurement of objects is possible today thanks to tactile measurement technology. With very precise measuring volumes, we can achieve results within an accuracy of 1.8 μm .

By comparing it with the CAD model, it is possible to very easily and precisely establish deviations in the geometry and locate manufacturing errors. Also, with specialized software, it is possible to measure geometric tolerances of shape and position (GM&T).

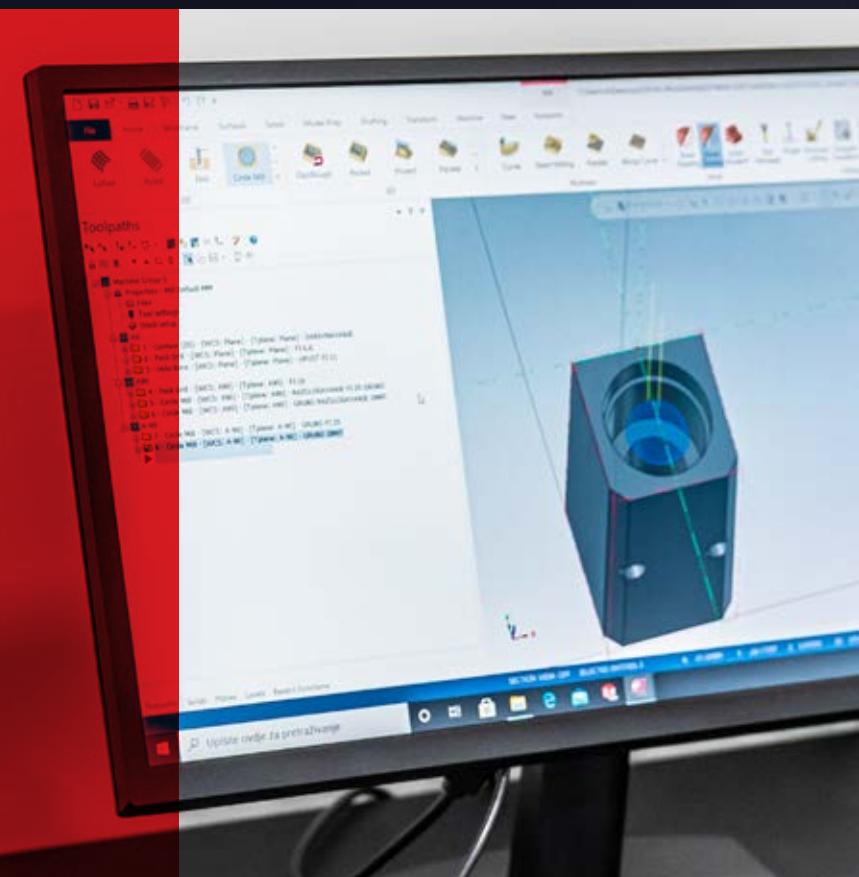
***PRECISION
IS A SKILL.***



CAD/CAM

By investing in new software and training our CAD/CAM programmers, we are following the latest CAD/CAM technologies and trends on the market.

We constantly strive for greater efficiency and the reduction of production costs and time.



CREATION OF PROTOTYPES AND THE ASSEMBLY OF COMPONENTS

In addition to manufacturing, we also offer the assembly of parts into components. Components consist of products manufactured in our plant in combination with products from other manufacturers and of ready-made purchased products, such as screws, nuts, motors, etc.

The parts are manufactured according to the client's order.



We also offer the manufacture of spare parts for our clients and the storage of those parts, with next-day delivery.

We advise you when making prototypes and when mounting assemblies.

LASER ENGRAVING

We can offer metal marking
and engraving.

Materials that we process:
steel | stainless steel | aluminum etc.

For complete service, we also offer in
cooperation with many suppliers the
surface protection of parts:

ANODIZING

CHROME PLATING

VARNISHING

BLUING

PAINTING

ELECTROPOLISHING

ZINCING

NICKEL PROTECTION

PLASTIFICATION

STORAGE AND DELIVERY




For larger orders, we offer free storage, which lowers the price and shortens the delivery time.

We cooperate with all courier and forwarding services. We take care to meet the agreed delivery dates of our clients.

We devote great attention to stacking and packing parts to prevent damage during transport.

For some clients in the EU who have emergency situations, we can make parts and transport them within 24 to 48 hours.



MACHINE PARK



HAAS VF4SS + HRT210

X/Y/Z > 1270 x 508 x 635 mm

RPM > 12k

AXIS > 4



HAAS VF2SS

X/Y/Z > 762 x 406x508 mm

RPM > 12k

AXIS > 3

HAAS VF2SS + HRT210

X/Y/Z

> 1270 x 508 x 635 mm

RPM > 12k

AXIS > 4



HAAS VF6SS

X/Y/Z

> 1626 x 813 x 762 mm

RPM > 12k

AXIS > 3



HAAS ST15Y

Max. Turning diameter

> 210 mm

Max. Turning length

> 406 mm

RPM > 4k

AXIS > 3

HAAS ST10

Max. Turning diameter > 165 mm

Max. Turning length > 406 mm

(RPM) > 4k

AXIS > 2



OUR PRODUCTS

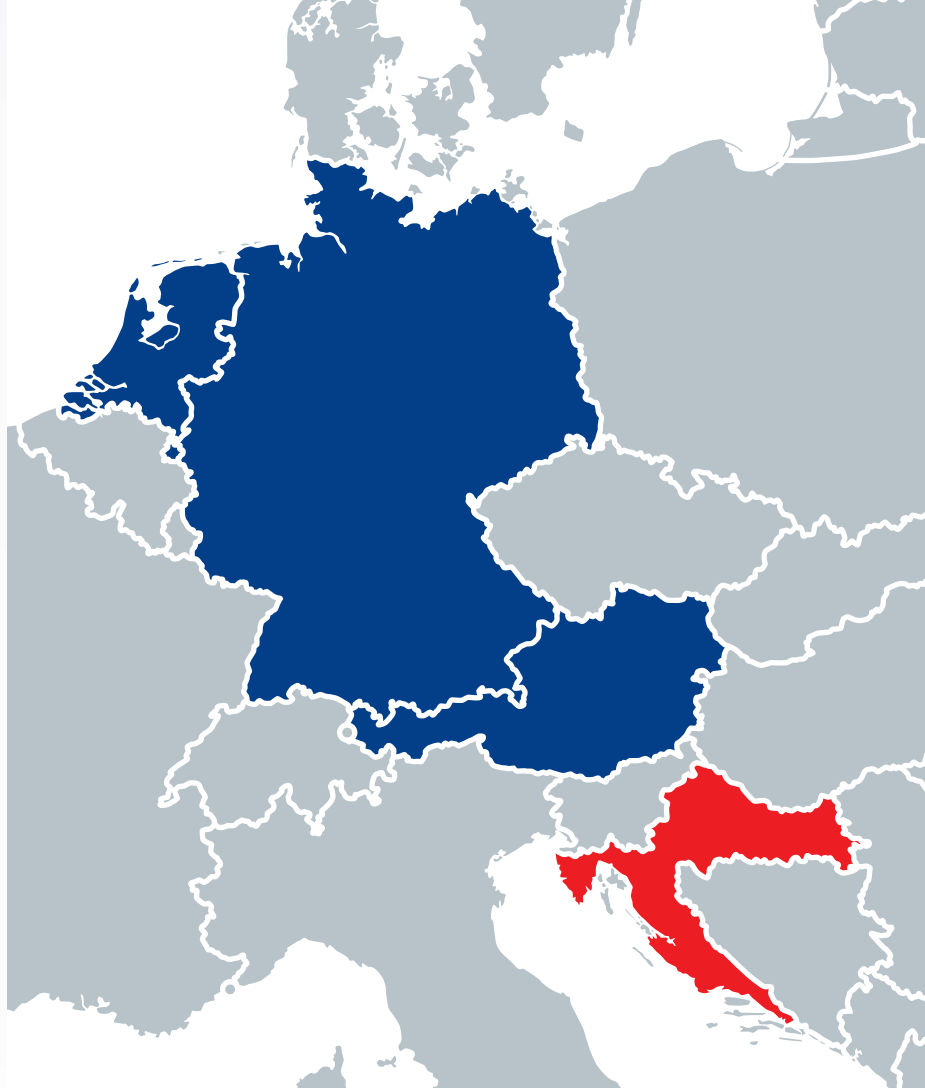




OUR PRODUCTS



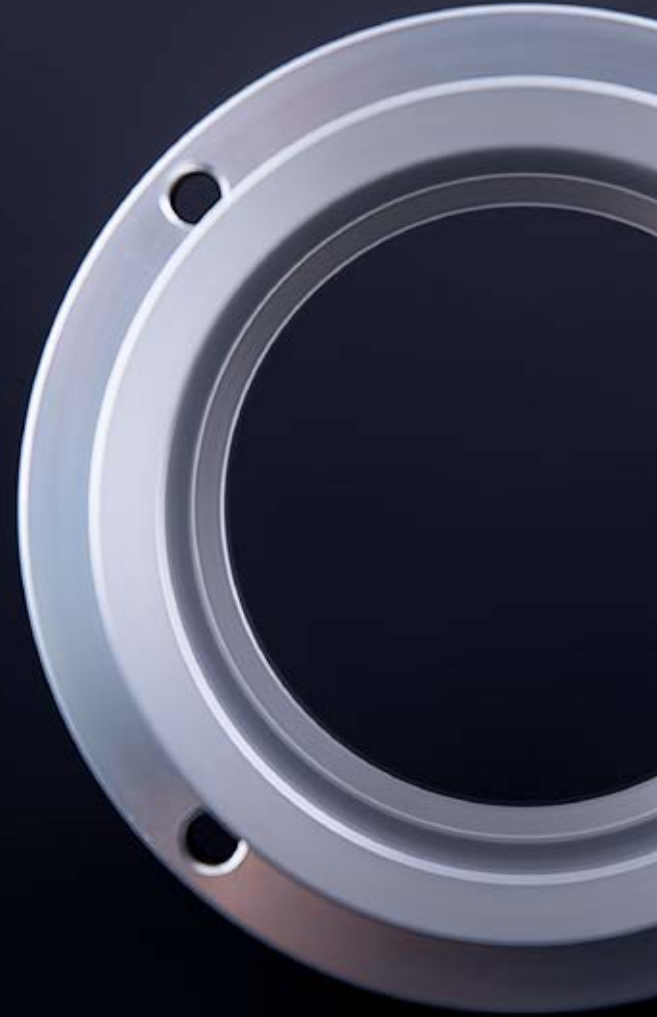




WE CREATE WITH CONFIDENCE.

ANCORP is an export-oriented company present on the markets in Austria, Germany, the Netherlands and other countries.







ANCORP d.o.o.

Moždenec 1U
HR-42220 Novi Marof
Croatia

P: +385 (0) 42 666 333

F: +385 (0) 42 666 300

E: info@ancorp.hr

www.ancorp.hr

